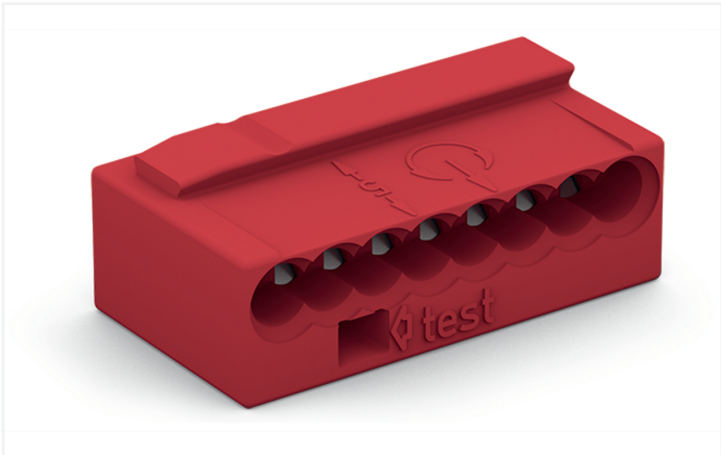
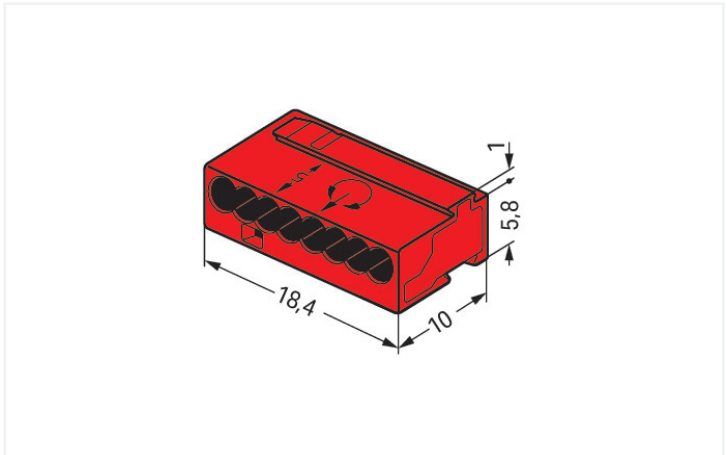


Data Sheet | Item Number: 243-808

MICRO PUSH WIRE® connector for junction boxes; for solid conductors; max. 0.8 mm Ø; 8-conductor; light gray cover; Surrounding air temperature: max 60°C; red <https://www.wago.com/243-808>



Color: ■ red



Dimensions in mm

Push wire® splicing connector, 243 Series, red

Our push wire® splicing connector (item number 243-808) ensures effortless electrical installations. Our 243 Series provides MICRO PUSH WIRE® connectors for junction boxes that are ideal for low-voltage installations in buildings. Regardless of whether you're wiring doorbells or intercom systems, our MICRO PUSH WIRE® connectors for junction boxes are the perfect size for these types of installations. This splicing connector has a rated voltage of 100 V and can handle currents up to 6 A. Ensure that the strip lengths are between 5 mm and 6 mm when connecting conductors to push wire® splicing connector. This product features one conductor terminal and utilizes PUSH WIRE®. Our PUSH WIRE® connection uses the stiffness of the conductor to overcome the clamping spring's contact force, allowing you to clamp the conductor in place more quickly and easily. Dimensions: 18.4 x 6.8 x 10 mm (width x height x depth).

Notes

General safety instructions

NOTICE: Observe installation and safety instructions!

- Only to be used by electricians!
- Do not work under voltage/load!
- Use only for proper use!
- Observe national regulations/standards/guidelines!
- Observe technical specifications for the products!
- Observe the number of permissible potentials!
- Do not use damaged/dirty components!
- Observe conductor types, cross-sections and strip lengths!
- Insert conductor until it hits the product's backstop!
- Use original accessories!

To be sold only with installation instructions!

| Electrical data | | | |
|----------------------|-----|----------|--------|
| Ratings per | | EN 60664 | |
| Overvoltage category | III | III | II |
| Pollution degree | 3 | 2 | 2 |
| Nominal voltage | - | - | 100 V |
| Rated surge voltage | - | - | 1.5 kV |
| Rated current | - | - | 6 A |



| Connection data | | | |
|----------------------------|---|---------------------------------|---|
| Clamping units | 8 | Connection 1 | |
| Total number of potentials | 1 | Connection technology | PUSH WIRE® |
| Number of connection types | 1 | Actuation type | Push-in |
| Number of levels | 1 | Connectable conductor materials | Copper |
| | | Solid conductor | 22 ... 20 AWG |
| | | Conductor diameter | 0.6 ... 0.8 mm / 22 ... 20 AWG |
| | | Conductor diameter (note) | When using conductors of the same diameter, 0.5 mm (24 AWG) or 1 mm (18 AWG) diameters are also possible. |
| | | Strip length | 5 ... 6 mm / 0.2 ... 0.24 inches |
| | | Wiring direction | Side-entry wiring |

| Physical data | |
|---------------|------------------------|
| Width | 18.4 mm / 0.724 inches |
| Height | 6.8 mm / 0.268 inches |
| Depth | 10 mm / 0.394 inches |

| Material data | |
|----------------------|--|
| Note (material data) | Information on material specifications can be found here |
| Color | red |
| Cover color | light gray |
| Fire load | 0.019 MJ |
| Weight | 1.4 g |

| Environmental requirements | |
|----------------------------------|--------|
| Ambient temperature (operation) | +60 °C |
| Continuous operating temperature | 105 °C |



| Commercial data | |
|-----------------------|---------------|
| PU (SPU) | 500 (50) pcs |
| Packaging type | Box |
| Country of origin | DE |
| GTIN | 4044918502795 |
| Customs tariff number | 85369010000 |

| Product classification | |
|------------------------|----------------------|
| UNSPSC | 39121409 |
| eCl@ss 10.0 | 27-14-11-04 |
| eCl@ss 9.0 | 27-14-11-04 |
| ETIM 9.0 | EC000446 |
| ETIM 8.0 | EC000446 |
| ECCN | NO US CLASSIFICATION |





| Environmental Product Compliance | |
|----------------------------------|------------------------|
| RoHS Compliance Status | Compliant,No Exemption |


Approvals / Certificates

| General approvals | | | Declarations of conformity and manufacturer's declarations | | |
|--|----------|------------------|--|----------|------------------|
|     | | | | | |
| Approval | Standard | Certificate Name | Approval | Standard | Certificate Name |
| CCA DEKRA Certification B.V. | EN 60998 | NTR NL 7812 | EU-Declaration of Confor- mity WAGO GmbH & Co. KG | - | - |
| CSA DEKRA Certification B.V. | C22.2 | 70048857 | UK-Declaration of Confor- mity WAGO GmbH & Co. KG | - | - |
| KEMA/KEUR DEKRA Certification B.V. | EN 60998 | 71-112493 | | | |
| UR Underwriters Laboratories Inc. | UL 1059 | E45172 | | | |




Approvals for marine applications

|   | | |
|--|----------|------------------|
| Approval | Standard | Certificate Name |
| ABS American Bureau of Ship- ping | - | 18-HG1755093-PDA |
| LR Lloyds Register | EN 60998 | LR22207029TA |

Downloads

| Environmental Product Compliance | |
|---|---|
| Compliance Search | |
| Environmental Product Compliance 243-808 |  |

Documentation

| Bid Text | | | |
|----------------------------|------------|-----------------|---|
| 243-808 | 19.02.2019 | xml 3.26 KB |  |
| 243-808 | 17.05.2017 | doc 25.00 KB |  |
| ausschreiben.de 243-808 | | |  |

| CAD/CAE-Data | |
|--|---|
| <div>CAD data</div> <div>2D/3D Models 243-808</div> <div>↓</div> | <div>CAE data</div> <div>EPLAN Data Portal 243-808</div> <div>↓</div> |
| | <div>WSCAD Universe 243-808</div> <div>↓</div> |

| 1 Compatible Products |
|--------------------------|
| 1.1 Optional Accessories |
| 1.1.1 Marking |
| 1.1.1.1 Marking strip |



Item No.: 210-332/575-103
Marking strips; as a DIN A4 sheet; MARKED; 1-12 (160x); Height of marker strip: 3 mm; Strip length 182 mm; Horizontal marking; Self-adhesive; white

| 1.1.2 Mounting adapter |
|------------------------------|
| 1.1.2.1 Mounting accessories |

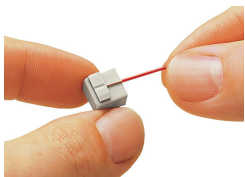


Item No.: 243-112
Mounting carrier; for 4 connectors; 243 Series; for DIN-35 rail mounting/screw mounting; orange

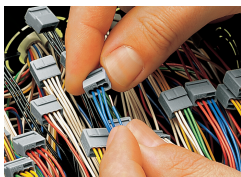


Item No.: 243-113
Mounting carrier; for 6 connectors; 243 Series; for DIN-35 rail mounting/screw mounting; orange

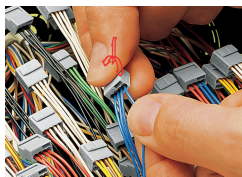
| Installation Notes |
|-----------------------|
| Conductor termination |



Strip solid conductors to 5 ... 6 mm (0.19 ... 0.23 inch).



Termination: Insert the stripped solid conductor until it hits the backstop.



Removal: Hold conductor to be removed and twist alternately left and right while pulling the connector.

| Installation |
|--------------|
|--------------|



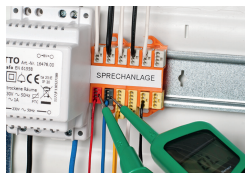
Connector strips:
Assembling modular connectors into connector strips.

Commoning



Commoned connector strips

Testing



Testing via test port opposite to conductor entry.



The 243 Series can be used in both communication and alarm systems according to the VdS (German Association of Property Insurers) guidelines.

No general approval is given to PUSH WIRE® connectors by the VdS association. The connectors must be tested together with the different parts of the system. The requirements for connectors are specified in the VdS guidelines for junction boxes (VdS 2116) in section 8.7: "The junction box connectors must be designed to guarantee a reliable and stable connection."

The verification of the fulfillment of these requirements is documented in the VDE test report No. 2574-1440-4031 for the insulated 243 Series PUSH WIRE® Connectors.